

TAG WATCH TUTORIAL

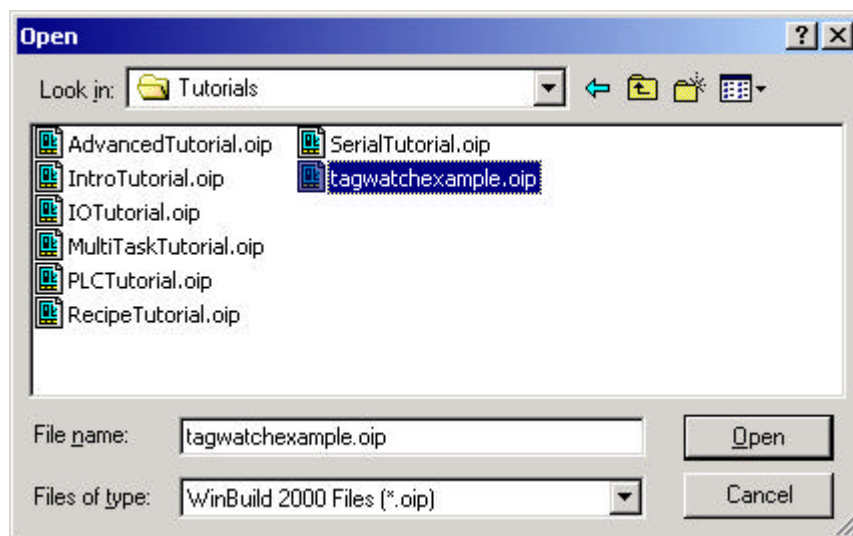
IN THIS TUTORIAL YOU WILL LEARN TO:

- Use the "TAG WATCHER" utility


STEP 1

Open the WinBuild 2000 project called "TagWatchExample."

Click "FILE | OPEN" and browse to the "Samples/Tutorial/" directory. Select the "TagWatchExample.oip" file, and click "open."

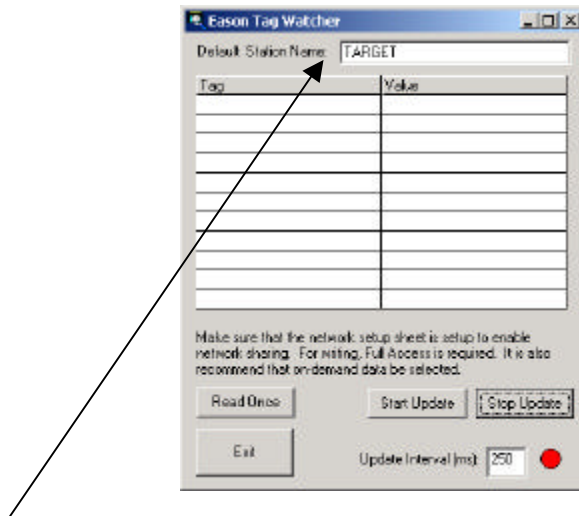


STEP 2

Now Compile, & Download the program into the Eason unit - Click on the "Compile, Download, and Reboot!" button. 

STEP 3	
-------------------	--

Now run the Eason Tag Watcher utility. From the Windows menu, select "START | PROGRAMS | WINBUILD 2000 | EASON TAG WATCHER." A blank window will appear with two columns.



The name TARGET is the default station name of the Eason unit you are reading from.

STEP 4	
-------------------	--

In the left column, type in the name of the following tags to monitor.



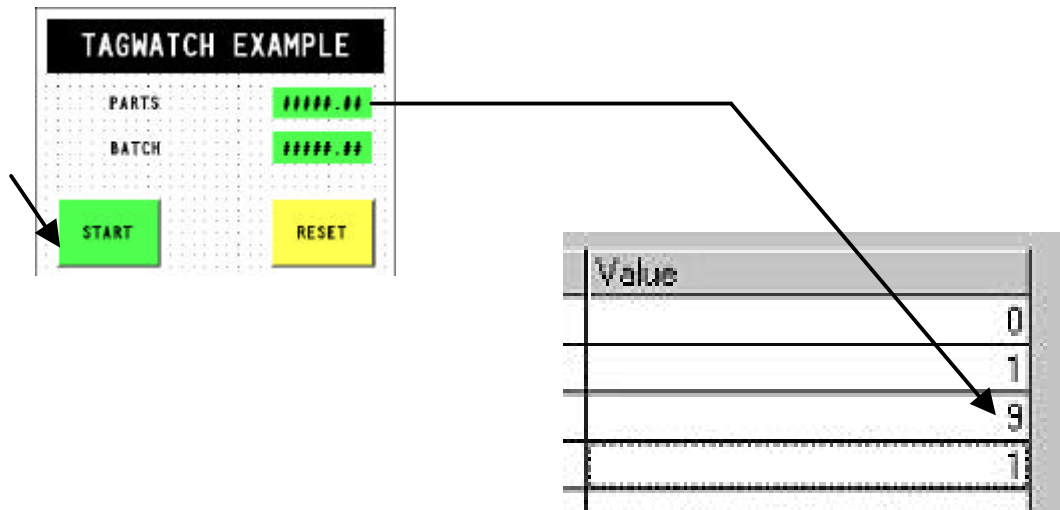
The right column is where the tag values as seen by the Eason will be displayed.

STEP 5	
-------------------	--

Click on the “START MONITOR” button in the Watch Window to start the online monitoring of the tag information. You can set the update rate. 250ms is a good default. Too quick of an update rate will result in not all tags being updated.

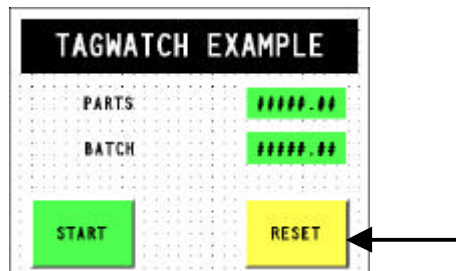
STEP 6	
-------------------	--

On the screen of the Eason unit, click on “Start” button to begin the product cycles and batch counting. The Watch Window gives you the ability to monitor values in the Eason unit. Once you have pushed the “Start” button, you will see these numbers incrementing in the watch window.



STEP 7	
-------------------	--

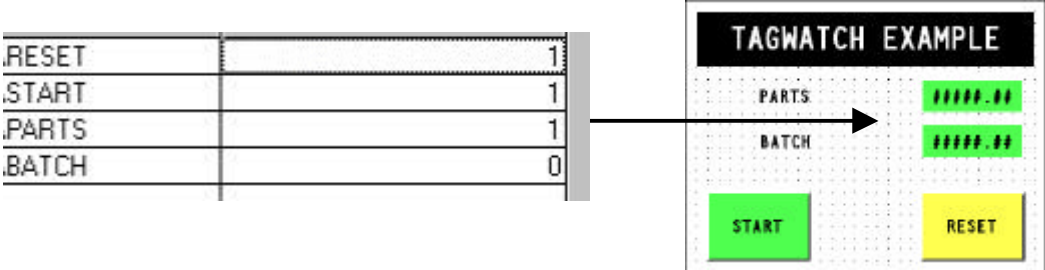
Hitting the “Reset” button on the Eason unit will cause both the PARTS and BATCH values to reset. Touch the “Reset” button on the Eason to observe this.



STEP 8	
-------------------------	--

The watch window gives you the ability to overwrite values currently in the unit for debugging purposes. However if the application in the unit causes the tag value to change, the tag will update to that appropriate value. The watch window does NOT force and hold values.

Type in a "1" for the RESET value in the watch window, and watch the PARTS and BATCH values reset.



Note that the tag watcher can only monitor INTERNAL VOLATILE TAGS only. Other data sourced to other locations (ie PLC, motion controller, nonvolatile) need to be copied (mapped) over to a internal volatile tag first before it can be "watched".