



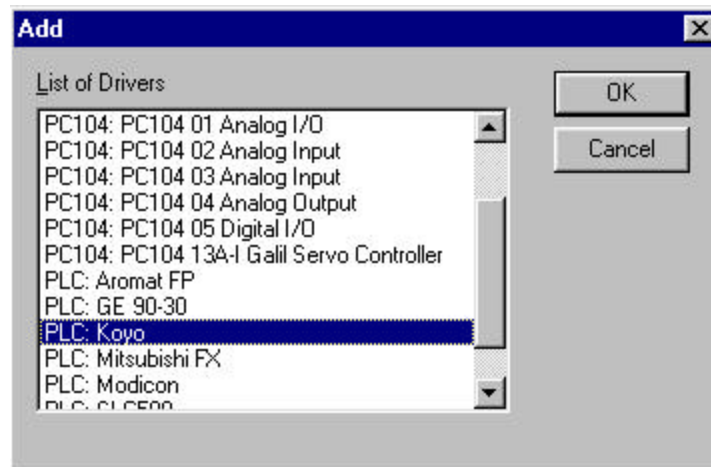
PLC INTERFACING TUTORIAL

If you have an external device in your project, and Eason has a driver for it, read through the following quick example of how to hook up a PLC to the Eason, and allow it to read/write data to the PLC. The same methodology applies to the Galil and Compumotor drivers. If your device does not have a specific serial driver, read the tutorial on External Serial Devices without drivers.

STEP 1	
-------------------	--

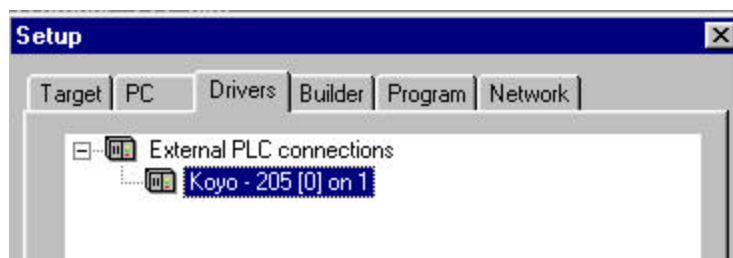
Start with a new project. "FILE | NEW"

Then add the driver to your project. Click on "SETUP | PROJECT | DRIVERS" and add the Koyo driver.



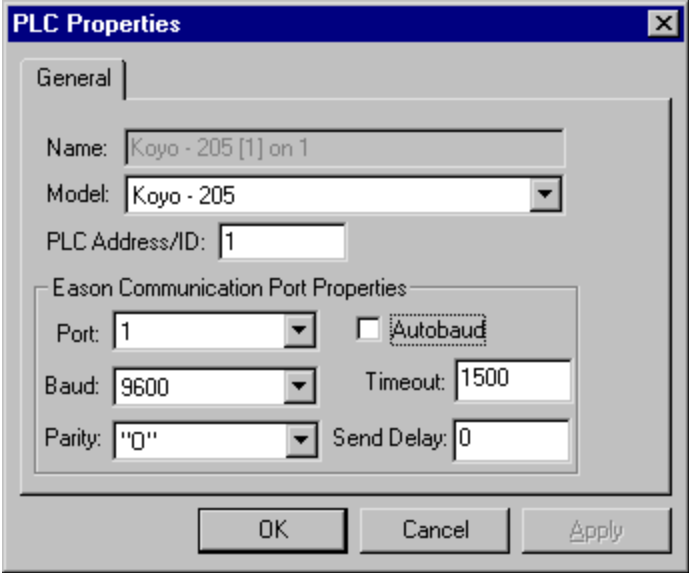
STEP 2	
-------------------	--

Click on the driver listing, and click the "Properties" button.



STEP 3	
-------------------	--

Set up the device driver for the following communication settings:





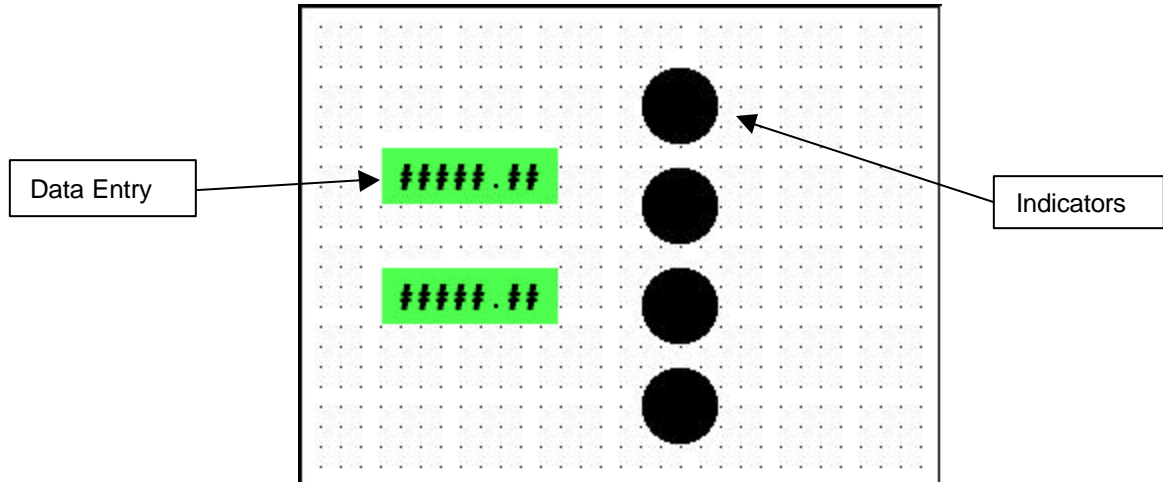
STEP 4	
-------------------	--

Now go to “SETUP | TAGS” and add six new tags, sourced to the Koyo PLC, and with the following addresses:

	Tag Name	Source	Address	Type	Default
1	TEMPORARY	Koyo - 205 [1] on 1	V0017	Word	0
2	TIMER_PRESET	Koyo - 205 [1] on 1	V2000	Word	0
3	INPUT_ZERO	Koyo - 205 [1] on 1	X0000	Bit	0
4	INPUT_ONE	Koyo - 205 [1] on 1	X0001	Bit	0
5	OUTPUT_ZERO	Koyo - 205 [1] on 1	Y0000	Bit	0
6	OUTPUT_ONE	Koyo - 205 [1] on 1	Y0001	Bit	0

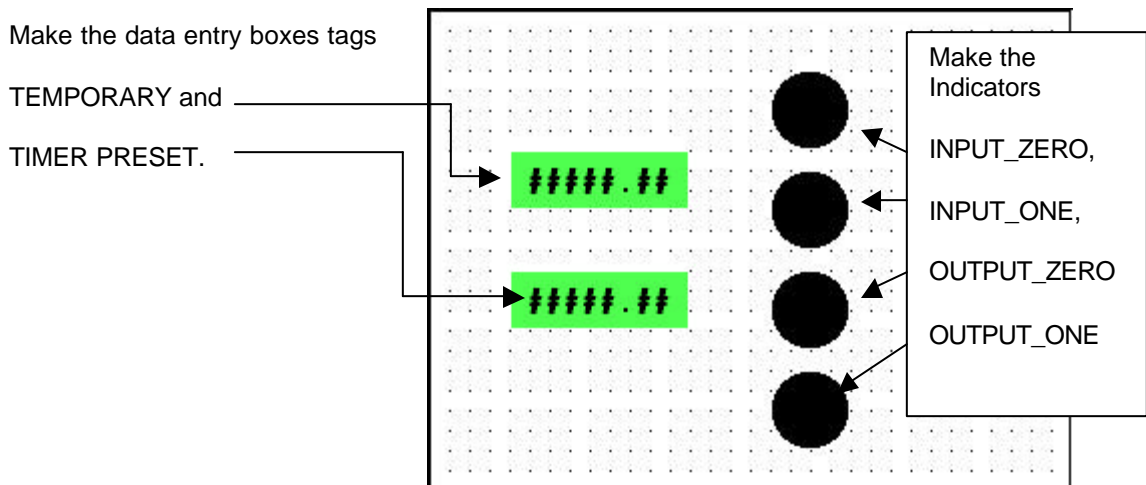
STEP 5

Now on your project screen, add two data display boxes and four indicators. Use the  tool to place a data display and a  tool to place an indicator.

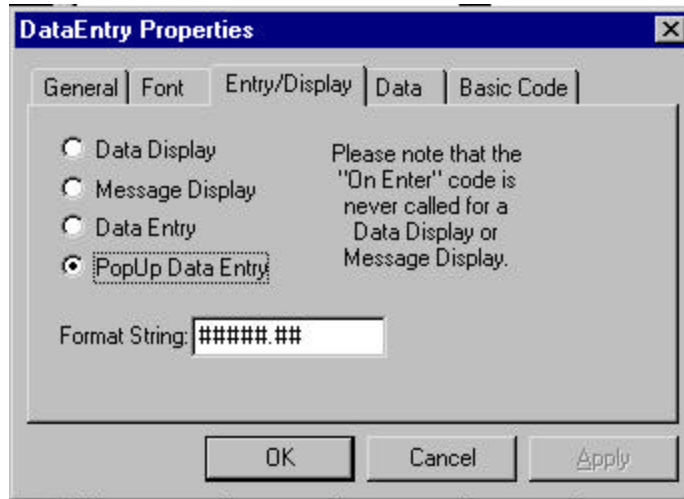


STEP 6

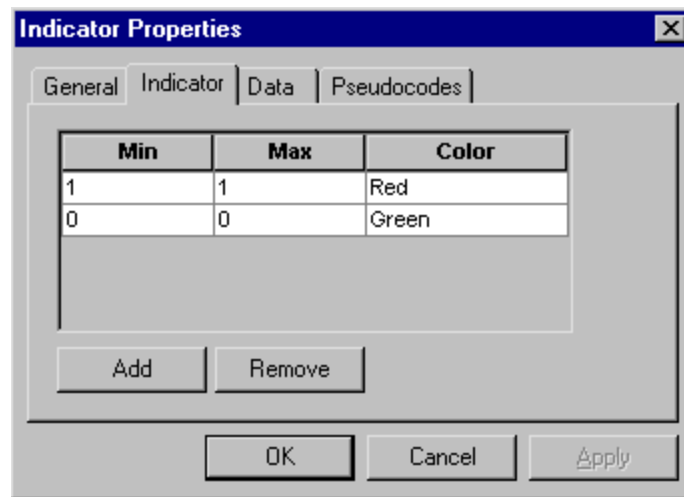
Double click each, and associate them with each of the tags we previously set up.




For the data displays make Temporary and TimerPreset a Pop-Up Data Entry by clicking the Entry/Display tab and click the PopUp Data Entry radio button.

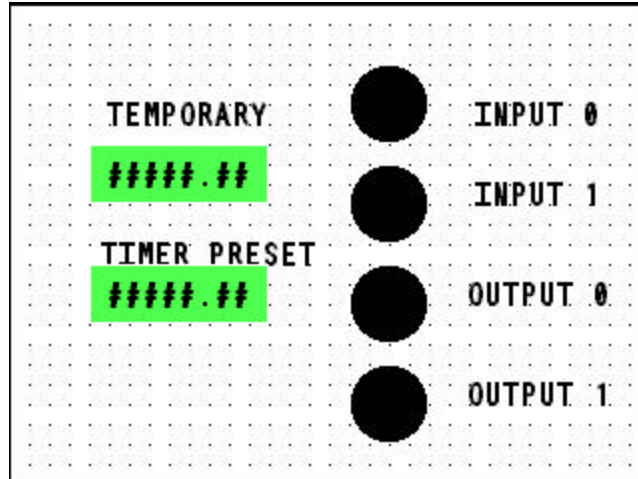


For each of the indicators, make them indicate **GREEN** when the tag is a value of **ONE**, and **RED** when a value of **ZERO**.



STEP 7	
-------------------------	--

Label your onscreen items with static text (use the  tool to select static text), and now your screen should now look like this:



STEP 8	
-------------------------	--

Compile, and download your program. Have your PLC powered up and connected to COM 1 on the Eason unit. Reboot the Eason unit.

Your application will come up. Now when the Eason is displaying this screen, the unit will automatically poll the Koyo for each of the displayed values on screen.

The data entry box allow you enter a value for “TEMPORARY” register V0017. Once you enter a value here, the Eason unit sends the value to the PLC.