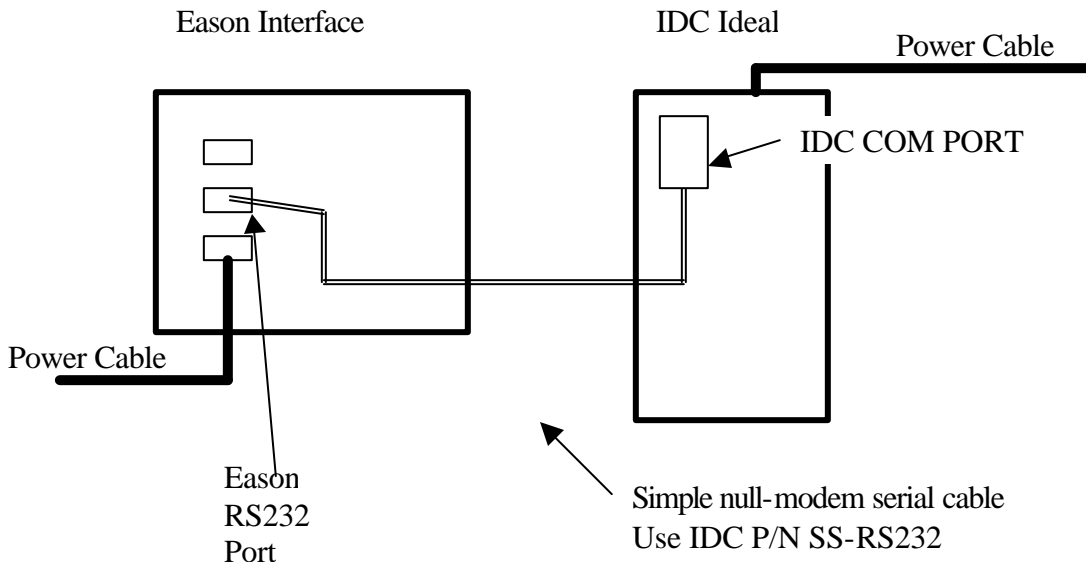


This document will outline how to connect an Eason 2000 Family product to an IDC Ideal.

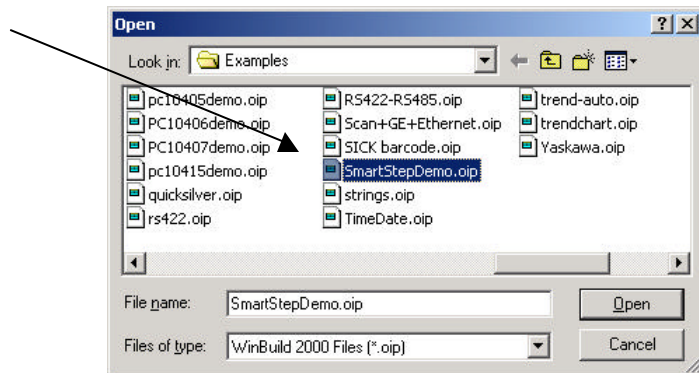
### Hardware Wiring

Connecting the Eason interface and the IDC Ideal via RS232 is simple. A null-modem serial cable between ports allows communication. Use the IDC serial cable SS-RS232.

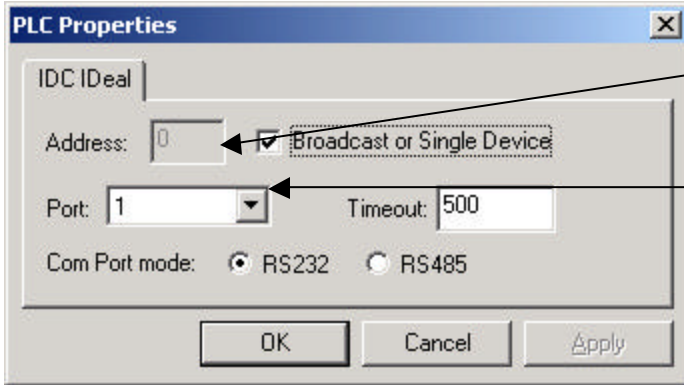


### Software Setup

Open up WinBuild 2000. Click to the 'examples' directory and load the "SmartStepDemo" example program.



After the program has loaded, click to "SETUP | PROJECT" and look at the tab labeled "Drivers". Highlight the "IDC Ideal Devices" entry and click the "Properties" button.



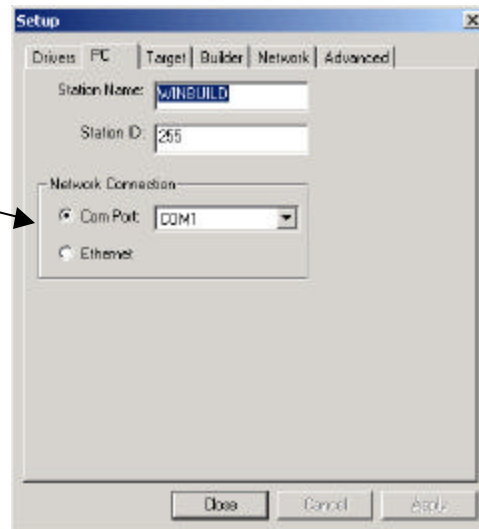
Here you can set the address of the IDC impulse that you will communicate to.

Here you'll see where you can set which Eason port you will use to communicate to the IDC.

Also here are settings to configure a multi-drop or daisy-chain setup with RS232 or RS485.

Click "OK" again to exit the IDC Ideal Driver setup.

Click the "PC" tab and select which port on your PC you wish to use for downloading to the interface.

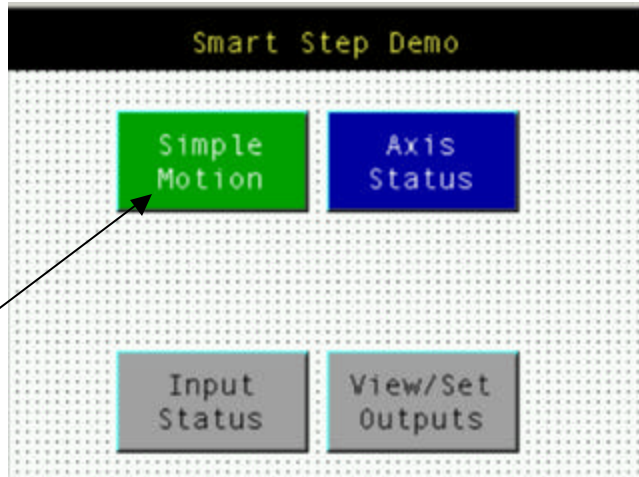


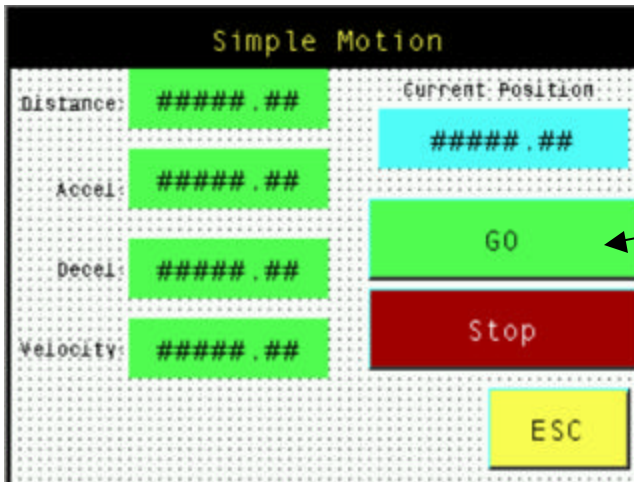
Click "CLOSE" when done.

Now select the "COMPILE, DOWNLOAD, REBOOT" button from the menu bar. This will compile your Eason program, and download it into your interface.

When the download is complete, the unit will reboot.

Touch the "Simple Motion" button- let's make some moves!





Enter a distance, accel, decel, velocity into the interface.

Touch the "GO" button to send the commands to the IDC and start the motion.

Take a look at some of the other screens that let you play with the I/O, toggle the motor direction, and read the status of motion axis.

Other features the Eason Interface can offer in creating your HMI:

Nonvolatile data storage – save information or setups into battery-backed memory.

Recipe Manager – allows you to organize, edit, and save setup information, move profiles, etc into records you can select onscreen.

Screen Objects – Indicators, text messaging, data displays, buttons, bitmaps all help you build an interactive and informative HMI.